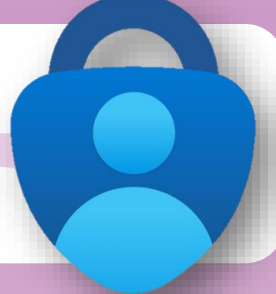


Authenticator



What can you use Authenticator for?



Perform multi-factor authentication to gain access to Endeavour Foundation resources and data on your mobile and laptop.

Who can use Authenticator?

- Everyone!

Setting up your Authenticator account:

1

Open the authenticator app on your phone

2

Click the '+' symbol to add an account and choose **'work or school'**

3

Log in using your Endeavour Foundation credentials

4

Go to **'Settings'**

5

Scroll and enable **'Require Biometric or PIN'**

6

You can now complete MFA using your fingerprint or Face ID

